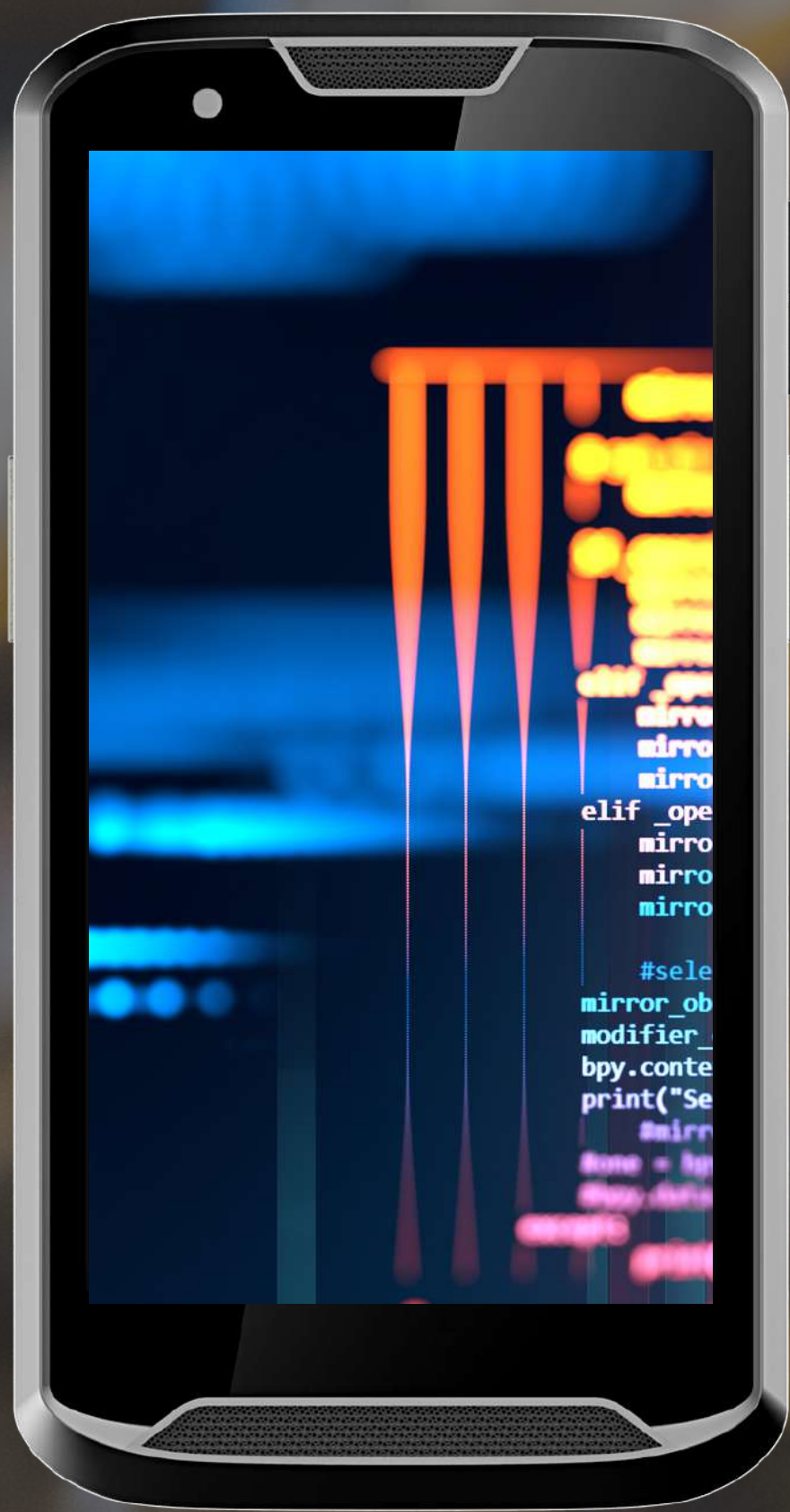


# M1 MOBILE DATA TERMINAL



DESIGNED FOR ENTERPRISE USE

5 INCH IPS SCREEN  
PORTABLE DESIGN FOR  
EASY OPERATION

QUAD-CORE 64-BIT HIGH  
SPEED PROCESSOR  
RAM+ROM:2GB+16GB



EXCELLENT DECODING  
ZEBRA ENTERPRISE-CLASS 1D/2D SCANNER

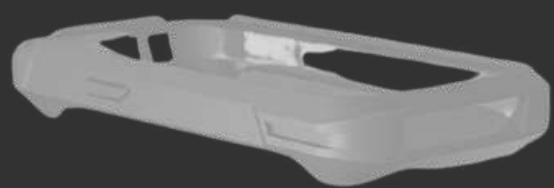


ANDROID  
9.0

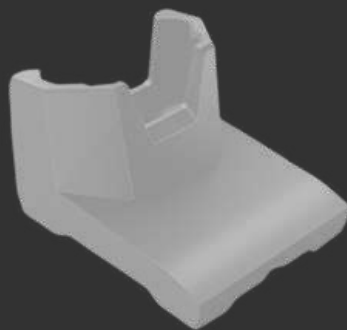
## APPLICATIONS

- MANUFACTURING
- WAREHOUSE
- LOGISTICS
- RETAIL

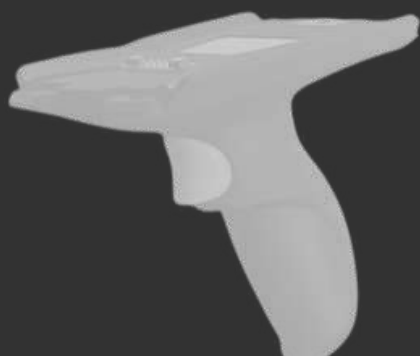
## OPTIONAL ACCESSORIES



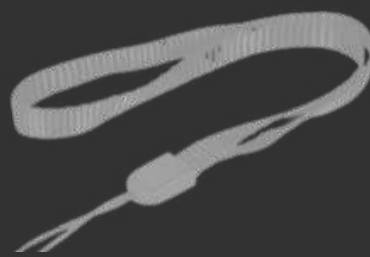
MOUNTINGKIT



1 SLOT CRADLE



TRIGGER GUN



HAND STRAP



5-SLOT CRADLE



RFID

# adler

[WWW.ADLERPOS.COM](http://WWW.ADLERPOS.COM)

# M1-SPECIFICATION

PROCESSOR/CPU	Quad-core Cortex- A53 2.0GHz
RAM+ROM	2GB+16GB
Operating System	Android 9.0
Display	5" 1280*720 Multi-Touch to Support Glove Touch
Extensible Storage	Micro SD card can be extended to 128GB
Button	POWER, VOLUME+, VOLUME-, LEFT AND RIGHT SIDE SCANNING KEYS, REAR PROGRAMMABLE KEY
Mobile Network	SUPPORT BOTH FDD- LTE AND TDD- LTE 4G MODES LTE B1/3/5/7/8/20/38/40 EUROPE UMTS B1/2/5/8   GSM B2/3/5//8
Wi-Fi	2.4G/5G Wi-Fi(Multi-frequency) support 802.11 a/b/g/n
Bluetooth	SBluetooth 4.2 BLE
Ethernet	Ethernet IEEE 802.3 over USB
Audio	Loudspeaker, Reproducer, Speaker
GPS	GPS & A- GPS High-accuracy
Sensor	Acceleration sensor, light sensor, distance sensor
Camera	5 Megapixel & 8 Megapixel color camera
Scanner	SE4710 Hanin 1D/2D imager s100k (compatible with Zebra SE4710)
NFC	Support 13.56MHz, ISO14443 A&B, and ISO15693 protocol
RFID	Support EPC Class 1 Gen 2 (ISO 18000-6c) protocol with RFID UHF handle
Card Slot Type	Nano SIM Card, Micro SD(TF) Card
Battery	Not removable, lithium battery capacity 4000mAh
Optional Accessories	Scanner Trigger Gun   RFID Sled   MountingKit   Hand Strap   5 Slot Cradle & 1 Slot Cradle For Charging
Protection Degree Working Environment	More than IP54 Operating temperature-20°C to 50° C Storage temperature-40°C to 60°c